

## Notice of Intent to Apply Aquatic Herbicide

Beale Air Force Base (AFB) intends to apply herbicide from 27-September through mid-October 2021 to remove invasive plant species from multiple locations on Base.

- A) Chemical control of Himalayan blackberry (*Rubus armeniacus*) along Reeds Creek (Figure 1). Chemical control will consist of green leaf application of Roundup Custom (an aquatic-approved glyphosate formulation) mixed with a non-ionic (aquatic-safe) surfactant. As no water will be treated directly, there would be no restrictions for irrigation, recreation or domestic purpose for this application. Precautions will be followed to minimize the potential for aquatic contamination. There are no access restrictions for this herbicide.
  
- B) Mechanical removal of tamarisk (*Tamarix parviflora*) at Pond 4 (Figure 2) will be followed by cut-stump application of Roundup Custom (an aquatic-approved glyphosate formulation) mixed with a non-ionic (aquatic-safe) surfactant. As no water will be treated directly, there would be no restrictions for irrigation, recreation or domestic purpose for this application. Precautions will be followed to minimize the potential for aquatic contamination. There are no access restrictions for this herbicide.
  
- C) Mechanical removal of tree-of-heaven (*Ailanthus altissima*) in Dry Creek at 4 Bridges (Figure 3) will be followed by cut-stump application of Roundup Custom (an aquatic-approved glyphosate formulation) mixed with a non-ionic (aquatic-safe) surfactant. As no water will be treated directly, there would be no restrictions for irrigation, recreation or domestic purpose for this application. Precautions will be followed to minimize the potential for aquatic contamination. There are no access restrictions for this herbicide.

For additional information about this herbicide application please contact Eli Rose ([Eli.Rose.ctr@us.af.mil](mailto:Eli.Rose.ctr@us.af.mil); 520-444-2119).

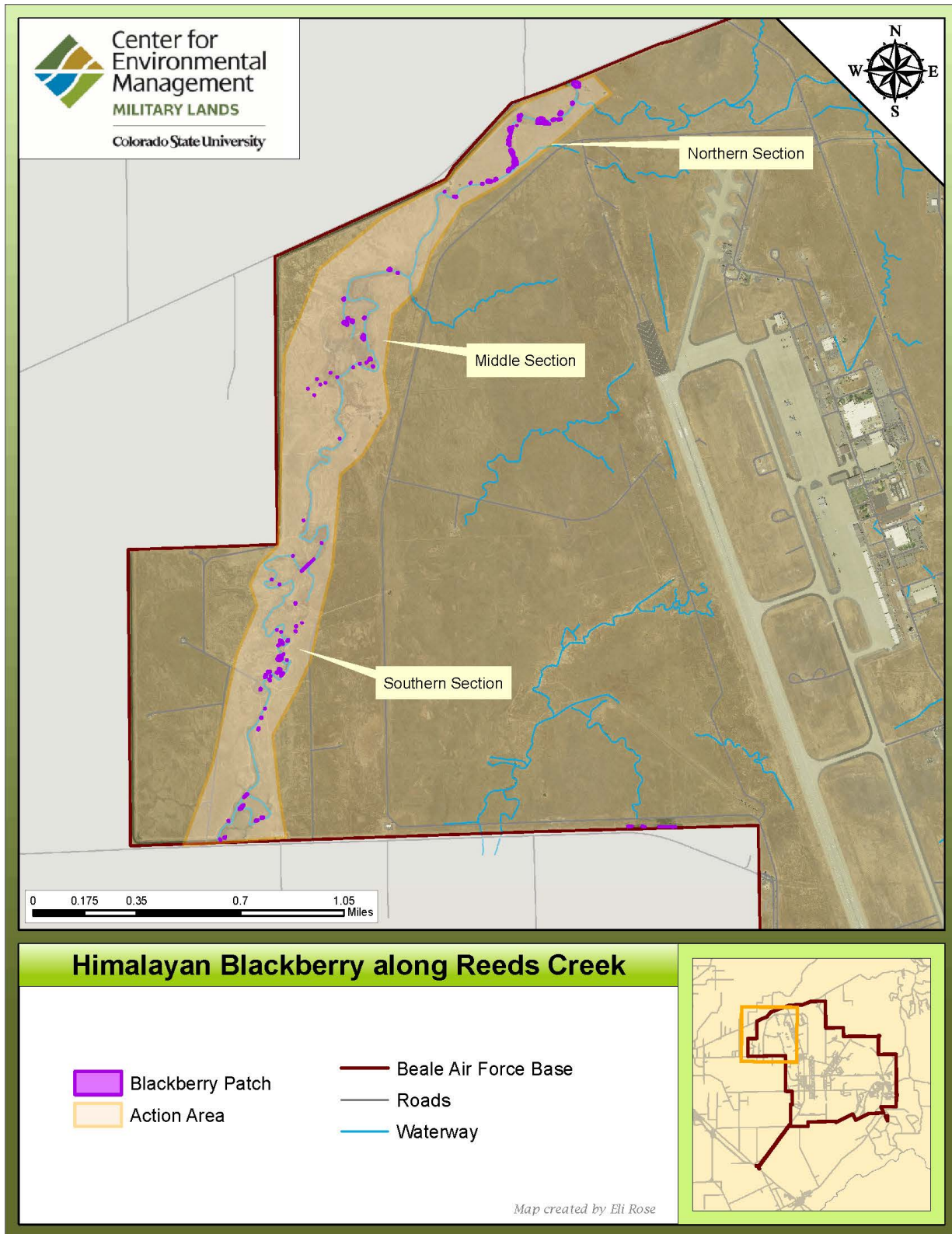


Figure 1. Overview of Himalayan blackberry infestations along Reeds Creek on Beale Air Force Base, California.

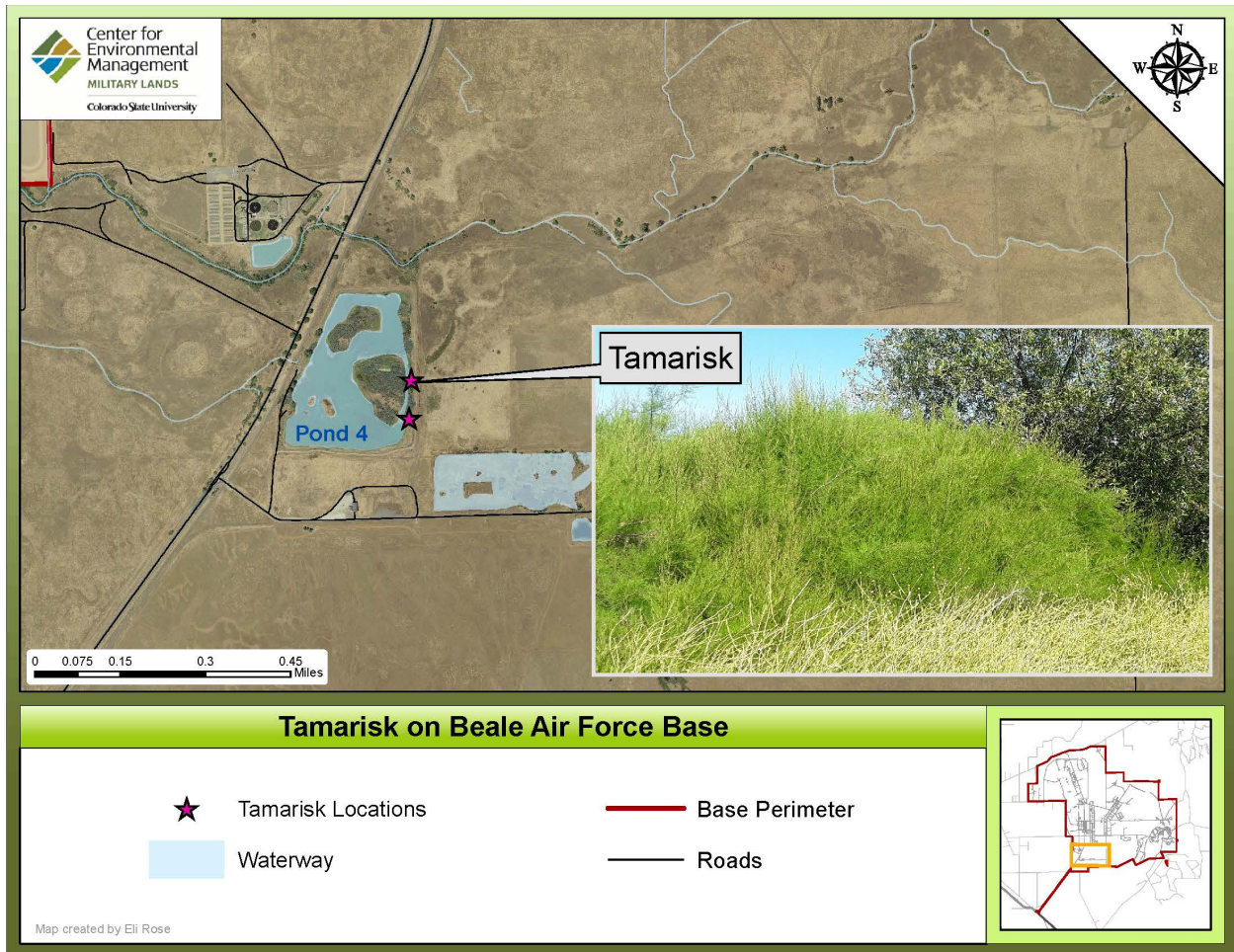


Figure 2. Tamarisk infestation along the Pond 4 impoundment, Beale Air Force Base, California.

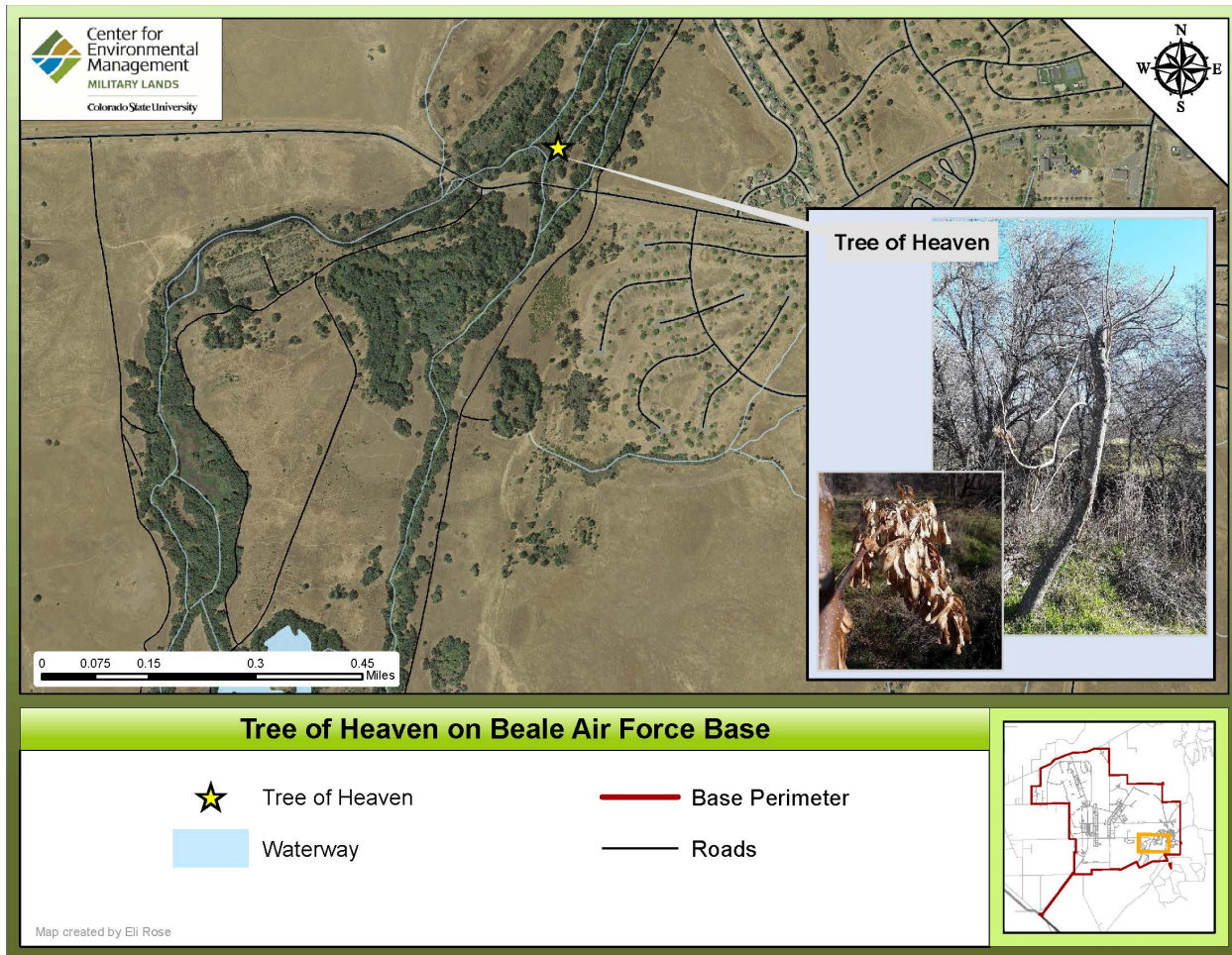


Figure 3. Tree-of-heaven infestation along Dry Creek, Beale Air Force Base, California.